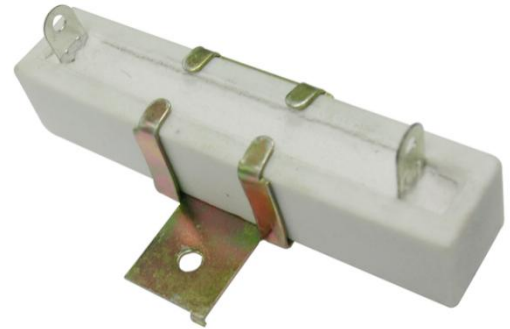
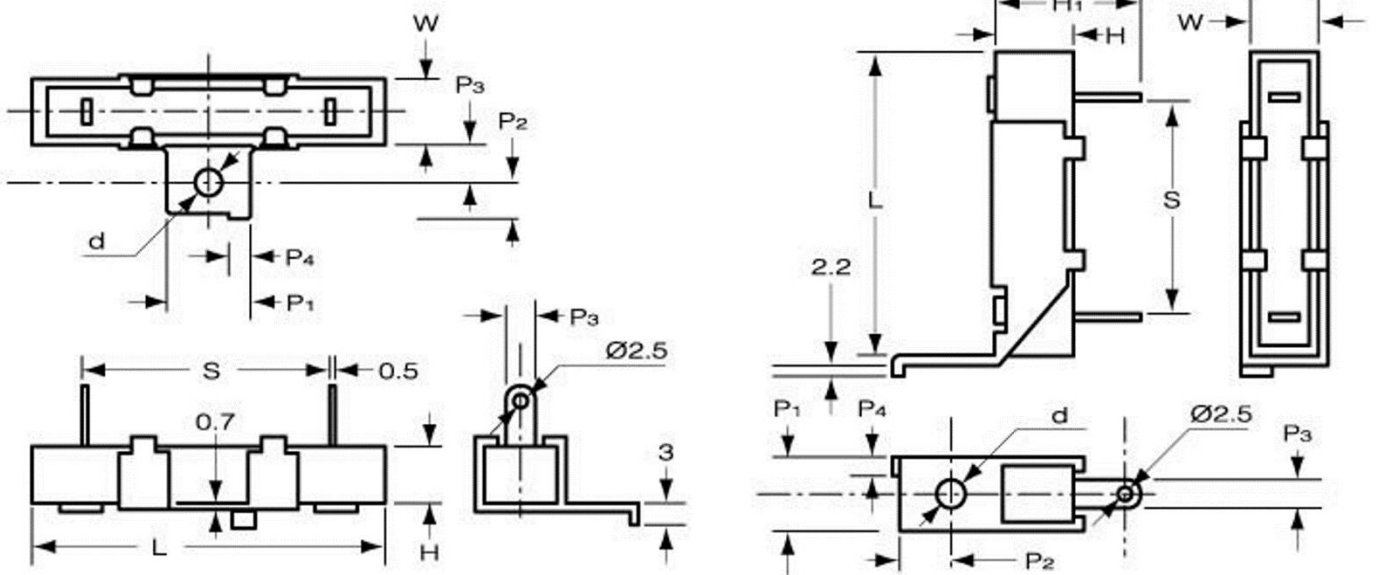


FEATURES

- Cement resistors are manufactured by winding the ceramic rods with metal alloy resistance wire and put it in a fireproof ceramic box then concrete with non-flammable and heat-resistant cement.



DRAWING and DIMENSIONS (mm)



STYLE	DIMENSIONS (mm)									
	L	H	W	S	P ₀	P ₁	P ₂	P ₃	P ₄	d
SQH-10W	48.0±2.0	10.5±1.5	10.5±1.0	33.0±2.0	8.0	11.0	6.0	6.0	3.0	3.8
SQH-15W	48.0±2.0	12.5±1.5	12.0±1.0	33.0±2.0	8.0	11.0	6.0	6.0	3.0	3.8
SQH-20W	63.5±2.0	12.5±1.5	12.5±1.0	48.0±2.0	8.0	11.0	6.0	6.0	3.0	3.8
SQH-25W	63.5±2.0	12.5±1.5	12.5±1.0	46.0±2.0	10.0	11.0	6.0	6.0	3.0	3.8
SQH-30W	70.0±2.0	19.0±1.5	18.0±1.0	56.0±2.0	10.0	18.0	8.0	8.0	3.5	3.5
SQH-40W	90.0±2.0	19.0±1.5	18.0±1.0	70.0±2.0	10.0	18.0	8.0	8.0	3.5	3.5
SQH-50W	90.0±2.0	19.0±1.5	18.0±1.0	70.0±2.0	10.0	18.0	8.0	8.0	3.5	3.5



ELECTRICAL SPECIFICATIONS

Style	Power Rating 70°C			
	SQH-10W	SQH-15W	SQH-20W	SQH-30W
Operating Temp. Range	-55°C ~ +155°C			
Max. Working Voltage	350V	350V	500V	500V
Max. Overload Voltage	500V	700V	1000V	1000V
Dielectric Withstanding Voltage (AC)	1000V	1000V	1000V	1000V
Value Range ±5% (Ceramic core)	0.39 ~ 300Ω		0.51 ~ 1K	
Value Range ±5% (Metal Oxide Film)	300Ω ~ 10K			
Temp. Coefficient	±300ppm/°C			

* a. Standard resistance is as the above list, below or over this resistance is on request.
b. Value for NKN Non-Inductive type is up to 50Ω only.

FIG.1 DEARATING CURVE

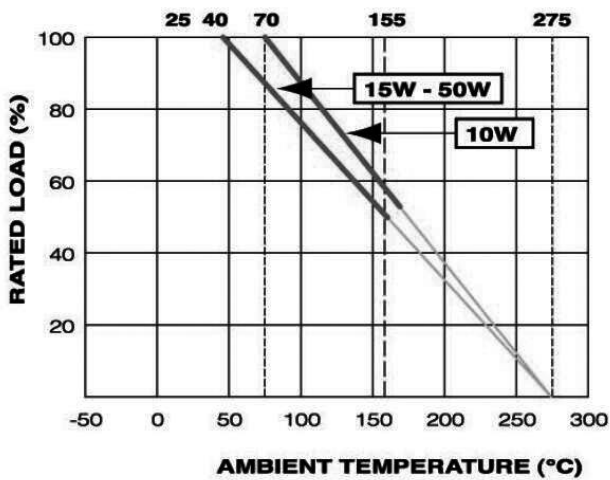
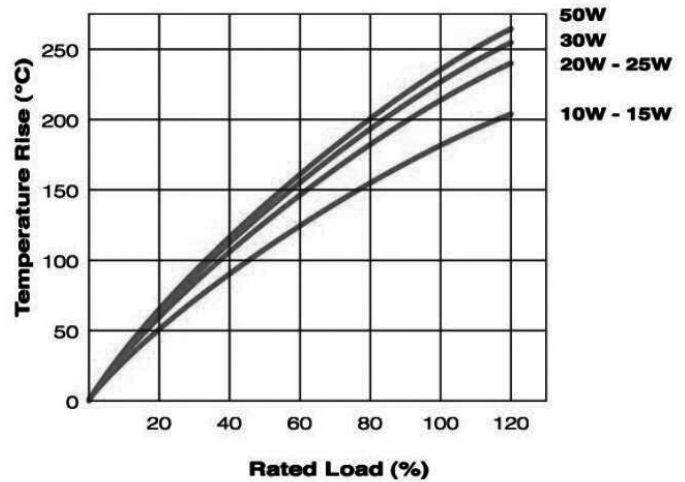


FIG.2 TEMPERATURE RISE



Note: Other resistance is available on request. WEET is capable of doing custom service for you.



WEE Technology Company Limited
FLAT/RM 705, 7/F,
FA YUEN COMM BLDG NO.75,
FA YUEN STREET, MONG KOK, KL, HK
www.weetcap.com
info@weetcap.com

All details in this data sheet are subject to change without notice.
For more details and updates, please visit our website.

Copyright © 2000 WEE Technology, All rights reserved.

